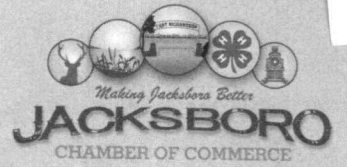


# 2024 DIGITAL SIGN



*City of Jacksboro  
EDC  
Chamber  
Court of J. J. L.  
\$11,000*

The purpose of the Chamber's digital sign, located downtown on the Courthouse lawn, is to promote Chamber members, to be a major source of community information and to promote area community and tourism events. The Chamber's downtown digital sign is a great avenue through which to promote our Members, local businesses, community events and announcements for tourism events and attractions. The sign is located on the courthouse lawn at 100 N. Main Street, downtown Jacksboro. With the last four years averaging 88,000 people, per year, to visit our downtown, the sign shows great benefit for advertising and reaching a wide target audience.

The total cost of the sign will be \$45,000. The Chamber is asking your business for \$11,000 to help with the purchase. With your buy in, you will have unlimited signage use (\*as long as no political messages are advertised) for the lifetime of the digital sign. Below you can find how your entity can benefit from the use of contributing to the purchase of this sign.

## Ways to advertise to the masses with the digital sign:

### OPPORTUNITIES:

Target individuals who can relocate their business to Jacksboro.  
Share hiring notices.  
Provide advertisement opportunities.

### QUICK MASS COMMUNICATION:

Emergency systems can use the sign to push messages out - boil water notice, tornado watch, freezing weather notification/help.

### EVENTS

Bring awareness to community wide events - church groups, Lions Club, voting days and locations, back to school information.

### COMMUNITY SPIRIT

It fosters a sense of community by promoting local activities and initiatives - encouraging residents to participate and support local events and businesses

**FILED FOR RECORD**

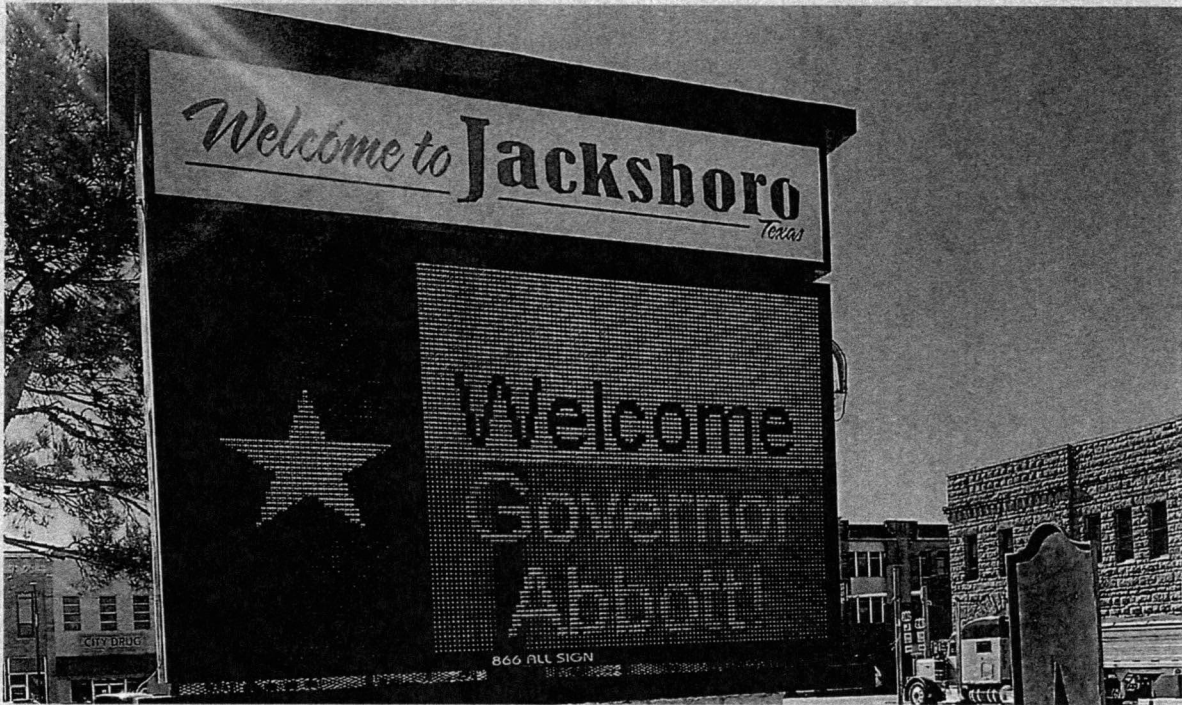
**CLOCK** \_\_\_\_\_ **M**

JUL 22 2024

W. B. ... County Clerk  
... RESIDENTS TEXAS  
... DEPUTY

\*As a partner in the digital sign, you will get free rights to advertise for the life of the sign, with some stipulations.

# 2024 DIGITAL SIGN



## How the Chamber will use the Digital Sign for financial gain:

A digital sign has a life expectancy of 10-15 years with the proper maintenance. Our sign was put up in 2013, and although has been maintained, has reached the life expectancy. Each higher tiered membership of the Chamber has a built in digital sign promotion line item. Going forward, the money raised from the tiered dues and advertisements fees will be placed into a separate financial account. Once that account has reached the replacement cost for a new sign and update cost for current sign, the income following will then be able to be dispersed for yearly Chamber use.

## How the Chamber will earn money from the sign:

### ADVERTISEMENT RATES

Advertisement fees are: \$1,200 for a full year, \$750 for six months, \$130 monthly, and \$30 for one week.

### BUSINESS ADVERTISEMENT

With one business along the Jacksboro square receiving 88,000 visitors a year, it makes sense why businesses would want to advertise on a digital sign that is directly in eye sight of just that one business.

### MODERN GRAPHICS AND VIDEOS

The Chamber currently has 6 consistent advertisers for the digital sign. This income is equivalent to \$3,500 per year. We are very limited with what can be shown on the sign. With a more modern display, we anticipate doubling that income within the first year.

### SPECIAL ANNOUNCEMENTS

Cards for yards is a popular way to celebrate a birthday or anniversary. The Chamber will be allowing a certain amount of special announcements for the same type of celebrations for an equivalent fee.

\*As a partner in the digital sign, you will get free rights to advertise for the life of the sign, with some stipulations.



KDCO, LLC dba ALL DIGITAL SIGNS, 583 Inspiration Point Rd, Mineral Wells, TX 76067 · TDLR State Electrical Contractor License #18788, Est. 2001

5-6-2024. To: Keely Payne, President, Jacksboro Chamber of Commerce, 940 567 2602, office@jacksborochamber.com  
PROJECT: NEW DIGITAL SIGNAGE AT THE JACK COUNTY COURTHOUSE, 100 NORTH MAIN ST, JACKSBORO, TX 76458.

**SELLER REPLACES BUYER'S DIGITAL SIGN WITH NEW DIGITAL SIGNAGE AS QUOTED BELOW.**

INCLUDES: 2-sided full-color high resolution true RGB (red, green and blue LEDs), radio communications, windows software & training, startup ads. \*Also includes full rebuild of Buyer's logo sign by adding new faces, paint, wiring and led lighting. 5-year parts warranty on everything! Digital sign inventory status: custom build (10 weeks). \*Quote valid 30 days.

Welcome to Jacksboro <sup>Texas</sup>

Current Digital Sign  
is 5'7x9'11

Welcome to Jacksboro <sup>Texas</sup>

Digital Sign is 5'4 x 10'4  
**GOD · BLESS!  
AMERICA**

Welcome to Jacksboro <sup>Texas</sup>

Digital Sign is 5'4 x 9'11  
**GOD · BLESS!  
AMERICA**



**CO-OP ADVERTISING DISCOUNT TERMS:**

\*You purchase our Digital Signage at cost and we Warranty EVERYTHING (Parts, Labor & Service Equipment) for 5-years!

\*In exchange, you simply display our 6 second co-op ad (SIGNS Call 866 ALL SIGN) once every 70 seconds at max size on your sign throughout the 9-year co-op ad period.

\*You may opt-out at any time by purchasing the remainder of the co-op ad discount at its pro-rated daily price (see bottom of the quote) multiplied by the number of days remaining in the co-op ad period.

**It's a Win-Win Partnership!**

**Quote #2: hms11128256gbrf  
with CO-OP DISCOUNT price**

**CONTRACT PRICING**

NON-CO-OP	WITH CO-OP
\$ 45,360.00	REGULAR PRICE \$ 45,360.00
\$ NA	CO-OP DISCOUNT \$ -4,990.00
\$ 45,360.00	CONTRACT TOTAL \$ 40,370.00
\$ 34,020.00	DUE @ ORDER \$ 30,277.50
\$ 11,340.00	DUE @ FINISH \$ 10,092.50

\*The Co-Op Ad Discount Cost is \$1.52 per day.

**Quote #4: hms11128224gbrf  
with CO-OP DISCOUNT price**

**CONTRACT PRICING**

NON-CO-OP	WITH CO-OP
\$ 41,440.00	REGULAR PRICE \$ 41,440.00
\$ NA	CO-OP DISCOUNT \$ -4,558.00
\$ 41,440.00	CONTRACT TOTAL \$ 36,881.00
\$ 31,080.00	DUE @ ORDER \$ 27,660.75
\$ 10,360.00	DUE @ FINISH \$ 9,220.25

\*The Co-Op Ad Discount Cost is \$1.39 per day

Buyer chooses Quote: #2 or #4

Buyer's Signature:

Date: (Contract attachment)

REVISIED 5-6-24

KDCO, LLC dba ALL DIGITAL SIGNS, 583 Inspiration Point Rd, Mineral Wells, TX 76067 . TDLR State Electrical Contractor License #18788, Est. 2001

**Quote #2: hms1128256rgbrf with OPTIONAL CO-OP DISCOUNTS \*Valid 30 days.**

5-6-2024. To: Keely Payne, President, Jacksboro Chamber of Commerce, 940 567 2602, office@jacksborochamber.com  
PROJECT: NEW DIGITAL SIGNAGE AT THE JACK COUNTY COURTHOUSE, 100 NORTH MAIN ST, JACKSBORO, TX 76458.

**SELLER REPLACES BUYER'S SIGNAGE WITH NEW SIGNAGE QUOTED BELOW.**  
INCLUDES: New 2-sided full-color high resolution true RGB (red, green and blue LEDs) Digital Signage with radio communications, windows software & training and startup ads. \*Also includes a full rebuild of Buyer's logo sign with new faces, paint, wiring and led lighting. \*A 5-year parts warranty is included on everything!  
SIGN INVENTORY STATUS: non-stock - custom build (10 weeks). \*In-stock Signs are sold on a first come basis.

Non-Co-Op Regular Price:	11% Co-Op Ad Discount:	Price with Co-Op Ad:	Daily Price of Co-Op Ad:
<b>\$ 45,360.00</b>	<b>\$ -4,990.00</b>	<b>\$ 40,370.00</b>	<b>\$ 1.52</b>

**SIGN SPECIFICATIONS**

**NEW PROGRAMABLE LED DIGITAL SIGN:**  
TRUE RGB HIGH RESOLUTION WITH 3 LEDs PER PIXEL (1-RED, 1-GREEN, 1-BLUE). 281 Trillion Colors for Processing 3" - 60" Text Characters, Video & Graphics. UL Listed 5'4 x 10'4 Black Aluminum Cabinet with 5' x 9'11 LED Screen with 32,768 Pixels & 98,304 LEDs per Face. 10,000 Nits Brightness, 160\* Viewing Angle, Wireless Radio Communications, Windows Software & Training, 5-year OEM Parts Warranty and Creation of Buyer's Startup Ads.  
**ELECTRICAL REQUIREMENTS AT THE SIGN:** 120VAC 22 amps per sign face

**REHAB THE EXISTING 2-SIDED LOGO SIGN:**  
INCLUDES: new faces with Buyer's choice of 2-color artwork, new paint and new internal LED lighting and 5-year parts warranty on everything!  
**ELECTRICAL REQUIREMENTS AT THE SIGN:** 120VAC 10 amps.

**SELLER RESPONSIBILITIES:**  
\*Provide labor, equipment and materials to complete signage installation, training and warranty services specified herein.

**BUYER RESPONSIBILITIES:**  
\*Provide all electricity as specified herein per NEC (National Electric Code). \*Sufficient electricity appears to already be in place. \*Provide a static IP address for the digital sign. \*Provide an on-site Windows PC or Laptop to program the digital sign. \*Line of sight is required between the office radio and sign radio. \*\*If line of site radio communications cannot be achieved from the office radio to the sign radio, CELL MODEM communications will be required at an additional cost of \$2,000.00 which includes a 5-year Verizon cell-data plan.

**CO-OP ADVERTISING DISCOUNT TERMS:**  
\*You purchase our Digital Signage at cost and we Warranty EVERYTHING (Parts, Labor & Service Equipment) for 5-years!  
\*In exchange, you simply display our 6 second co-op ad (SIGNS Call 866 ALL SIGN) once every 70 seconds at max size on your sign throughout the 9-year co-op ad period.  
\*You may opt-out at any time by purchasing the remainder of the co-op ad discount at its pro-rated daily price of \$1.52 multiplied by the number of days remaining in the co-op ad period.

**TERMS:** All work is cash, due and payable in Mineral Wells, Palo Pinto County, TX. Contract execution is constituted by Seller's receipt of Buyer's Dated Signature on the Contract and all Attachments, and receipt of Buyer's Down Payment. \*The Contract balance is due ON-SITE at completion of sign installation & successfully sending Buyer's Startup Ads to the Digital Sign. \*Upon Seller's receipt of Buyer's final payment, ALL SIGN LIABILITY passes immediately from Seller to Buyer. Sign Insurance is highly recommended.



<b>CONTRACT PRICING</b>		
NON-CO-OP		WITH CO-OP
\$ 45,360.00	REGULAR PRICE	\$ 45,360.00
\$ NA	CO-OP DISCOUNT	\$ -4,990.00
\$ 45,360.00	CONTRACT TOTAL	\$ 40,370.00
\$ 34,020.00	DUE @ ORDER	\$ 30,277.50
\$ 11,340.00	DUE @ FINISH	\$ 10,092.50

Buyer chooses: NON-CO-OP: \_\_\_\_\_ or CO-OP: \_\_\_\_\_

Buyer's Signature: \_\_\_\_\_ Date: \_\_\_\_\_ (Contract attachment)

KDCO, LLC dba ALL DIGITAL SIGNS, 583 Inspiration Point Rd, Mineral Wells, TX 76067 . TDLR State Electrical Contractor License #18788, Est. 2001

**Quote #4: hms1128224rgbrf with OPTIONAL CO-OP DISCOUNTS** \*Valid 30 days.

5-6-2024. To: Keely Payne, President, Jacksboro Chamber of Commerce, 940 567 2602, office@jacksborochamber.com  
PROJECT: NEW DIGITAL SIGNAGE AT THE JACK COUNTY COURTHOUSE, 100 NORTH MAIN ST, JACKSBORO, TX 76458.

**SELLER REPLACES BUYER'S SIGNAGE WITH NEW SIGNAGE QUOTED BELOW.**  
INCLUDES: New 2-sided full-color high resolution true RGB (red, green and blue LEDs) Digital Signage with radio communications, windows software & training and startup ads. \*Also includes a full rebuild of Buyer's logo sign with new faces, paint, wiring and led lighting. \*A 5-year parts warranty is included on everything!  
SIGN INVENTORY STATUS: non-stock - custom build (10 weeks). \*In-stock Signs are sold on a first come basis.

Non-Co-Op Regular Price:	11% Co-Op Ad Discount:	Price with Co-Op Ad:	Daily Price of Co-Op Ad:
<b>\$ 41,440.00</b>	<b>\$ -4,558.00</b>	<b>\$ 36,881.00</b>	<b>\$ 1.39</b>

**SIGN SPECIFICATIONS**

**NEW PROGRAMABLE LED DIGITAL SIGN:**  
TRUE RGB HIGH RESOLUTION WITH 3 LEDs PER PIXEL (1-RED, 1-GREEN, 1-BLUE). 281 Trillion Colors for Processing 3" - 60" Text Characters, Video & Graphics. UL Listed 5'4 x 9'1 Black Aluminum Cabinet with 5' x 8'8 LED Screen with 28,672 Pixels & 86,016 LEDs per Face. 10,000 Nits Brightness, 160\* Viewing Angle, Wireless Radio Communications, Windows Software & Training, 5-year OEM Parts Warranty and Creation of Buyer's Startup Ads.  
**ELECTRICAL REQUIREMENTS AT THE SIGN:** 120VAC 19 amps per sign face

**REHAB THE EXISTING 2-SIDED LOGO SIGN:**  
INCLUDES: new faces with Buyer's choice of 2-color artwork, new paint and new internal LED lighting and 5-year parts warranty on everything!  
**ELECTRICAL REQUIREMENTS AT THE SIGN:** 120VAC 10 amps.

**SELLER RESPONSIBILITIES:**  
\*Provide labor, equipment and materials to complete signage installation, training and warranty services specified herein.

**BUYER RESPONSIBILITIES:**  
\*Provide all electricity as specified herein per NEC (National Electric Code). \*Sufficient electricity appears to already be in place. \*Provide a static IP address for the digital sign. \*Provide an on-site Windows PC or Laptop to program the digital sign. \*Line of sight is required between the office radio and sign radio. \*\*If line of site radio communications cannot be achieved from the office radio to the sign radio, CELL MODEM communications will be required at an additional cost of \$2,000.00 which includes a 5-year Verizon cell-data plan.

**CO-OP ADVERTISING DISCOUNT TERMS:**  
\*You purchase our Digital Signage at cost and we Warranty EVERYTHING (Parts, Labor & Service Equipment) for 5-years!  
\*In exchange, you simply display our 6 second co-op ad (SIGNS Call 866 ALL SIGN) once every 70 seconds at max size on your sign throughout the 9-year co-op ad period.  
\*You may opt-out at any time by purchasing the remainder of the co-op ad discount at its pro-rated daily price of \$1.31 multiplied by the number of days remaining in the co-op ad period. **It's a Win-Win Partnership!**

**TERMS:** All work is cash, due and payable in Mineral Wells, Palo Pinto County, TX. Contract execution is constituted by Seller's receipt of Buyer's Dated Signature on the Contract and all Attachments, and receipt of Buyer's Down Payment.  
\*The Contract balance is due ON-SITE at completion of sign installation & successfully sending Buyer's Startup Ads to the Digital Sign. \*Upon Seller's receipt of Buyer's final payment, ALL SIGN LIABILITY passes immediately from Seller to Buyer. Sign Insurance is highly recommended.

**CONTRACT PRICING**

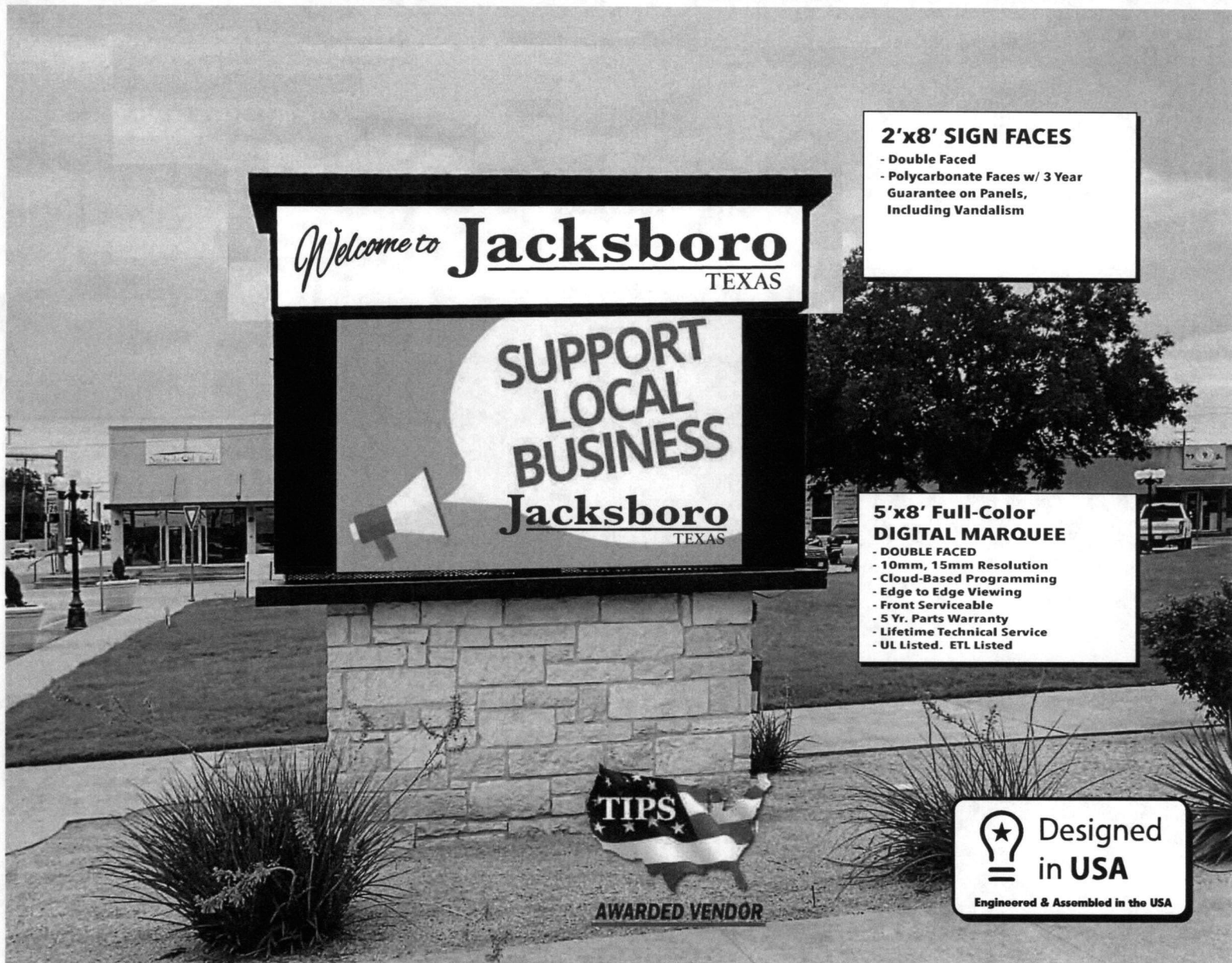
NON-CO-OP		WITH CO-OP
\$ 41,440.00	REGULAR PRICE	\$ 41,440.00
\$ NA	CO-OP DISCOUNT	\$ -4,558.00
\$ 41,440.00	CONTRACT TOTAL	\$ 36,881.00
\$ 31,080.00	DUE @ ORDER	\$ 27,660.75
\$ 10,360.00	DUE @ FINISH	\$ 9,220.25

Buyer chooses: NON-CO-OP: \_\_\_\_\_ or CO-OP: \_\_\_\_\_

Buyer's Signature: \_\_\_\_\_

Date: \_\_\_\_\_ (Contract attachment)





**2'x8' SIGN FACES**

- Double Faced
- Polycarbonate Faces w/ 3 Year Guarantee on Panels, Including Vandalism

**5'x8' Full-Color DIGITAL MARQUEE**

- DOUBLE FACED
- 10mm, 15mm Resolution
- Cloud-Based Programming
- Edge to Edge Viewing
- Front Serviceable
- 5 Yr. Parts Warranty
- Lifetime Technical Service
- UL Listed. ETL Listed



Designed in USA

Engineered & Assembled in the USA

**CORE** POWERED BY  
DISPLAYS **IMPACT**  
LED

**CORE DISPLAYS ARE VISUALLY STUNNING, INCREDIBLY BRIGHT, AND DESIGNED FOR ALL WEATHER CONDITIONS. OUR UNIVERSAL SIZE LED MODULE DESIGN OFFERS FLEXIBILITY MAKING IT PERFECT FOR ANY APPLICATION.**



**± 11,000 NITS ULTRA-HIGH BRIGHTNESS**  
x20 Brighter than an LCD TV.  
View in full daylight and dimmable at night. Based on LCD N avg. 500 Nits.

**10mm, 15mm & 19mm**

**PIXEL PITCH OPTIONS**  
Large IP67 LED diodes, ±100,000 hours lifetime, 1.15 quintillion colors.



**IP67 FRONT/IP54 REAR ALL-WEATHER TESTED**  
UV, salt-mist, vibration, ±temperature, voltage, and x2 waterproof tested. Fully sealed LED tile.



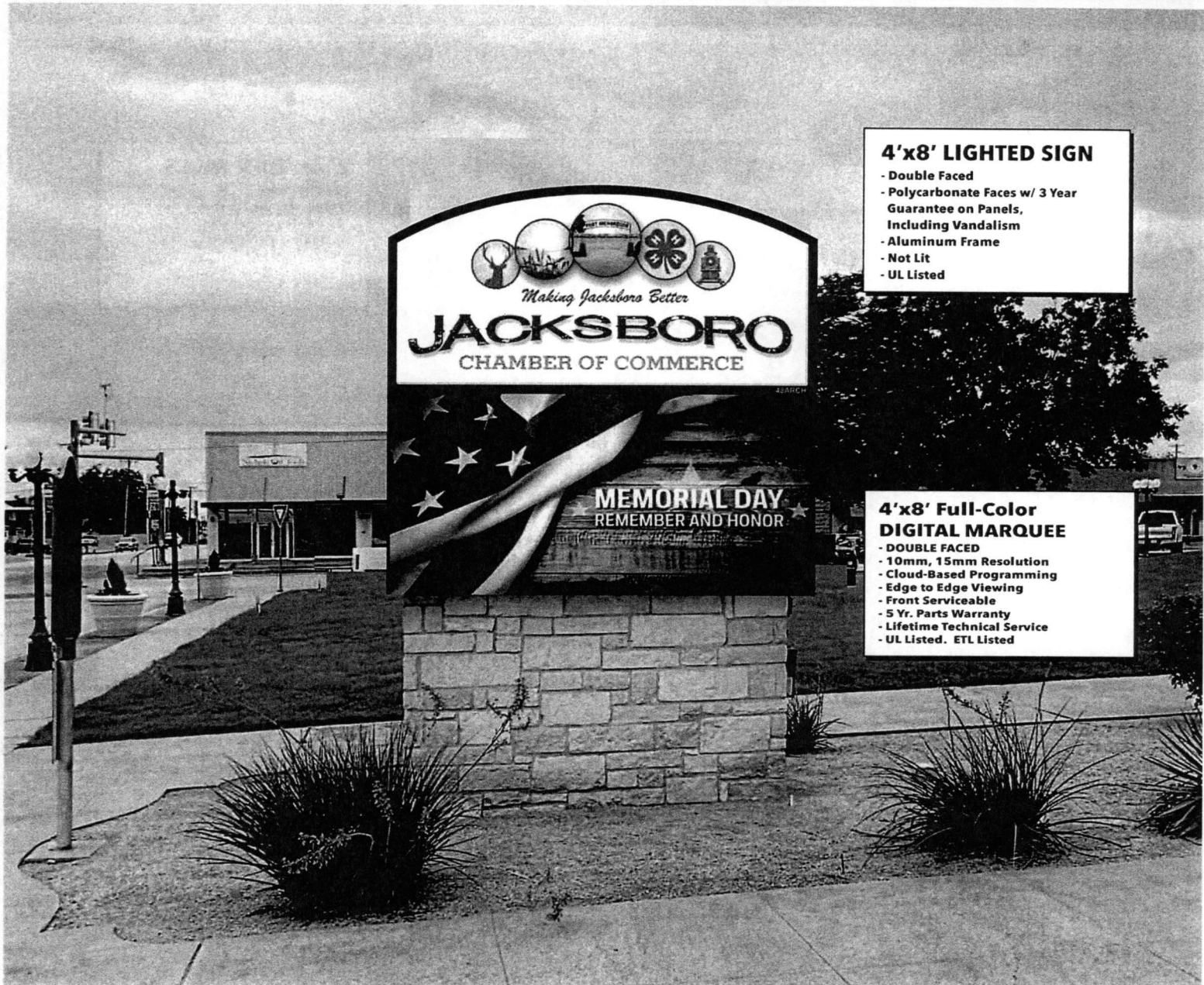
**OPTIMIZED VIEWING EXPERIENCE**  
±3840 Hz, 60 FPS smooth, full motion, camera-ready video playback.



**CONNECTIVITY OPTIONS**  
Network with, Ethernet, wireless, WIFI, Fiber Optic or 4G cellular technology.



**5 YEAR WARRANTY**  
5-Year parts and in-factory labor. 10-Year parts availability. On-Site Labor & Extended Warranties Available.



**4'x8' LIGHTED SIGN**

- Double Faced
- Polycarbonate Faces w/ 3 Year Guarantee on Panels, Including Vandalism
- Aluminum Frame
- Not Lit
- UL Listed

**4'x8' Full-Color DIGITAL MARQUEE**

- DOUBLE FACED
- 10mm, 15mm Resolution
- Cloud-Based Programming
- Edge to Edge Viewing
- Front Serviceable
- 5 Yr. Parts Warranty
- Lifetime Technical Service
- UL Listed. ETL Listed

**CORE**  
DISPLAYS

POWERED BY  
**IMPACT**  
LED

**CORE DISPLAYS ARE VISUALLY STUNNING, INCREDIBLY BRIGHT, AND DESIGNED FOR ALL WEATHER CONDITIONS. OUR UNIVERSAL SIZE LED MODULE DESIGN OFFERS FLEXIBILITY MAKING IT PERFECT FOR ANY APPLICATION.**



**± 11,000 NITS ULTRA-HIGH BRIGHTNESS**  
 x20 Brighter than an LCD TV.  
 View in full daylight and dimmable at night.  
 Based on LCD N avg. 500 Nits.

**10mm, 15mm & 19mm**

**PIXEL PITCH OPTIONS**

Large IP67 LED diodes, ±100,000 hours lifetime, 1.15 quintillion colors.



**IP67 FRONT/IP54 REAR ALL-WEATHER TESTED**  
 UV, salt-mist, vibration, ±temperature, voltage, and x2 waterproof tested. Fully sealed LED tile.



**OPTIMIZED VIEWING EXPERIENCE**  
 ±3840 Hz, 60 FPS smooth, full motion, camera-ready video playback.



**CONNECTIVITY OPTIONS**

Network with, Ethernet, wireless, WIFI, Fiber Optic or 4G cellular technology.



**5 YEAR WARRANTY**  
 5-Year parts and in-factory labor. 10-Year parts availability. On-Site Labor & Extended Warranties Available.

**To: Keely Hamman Payne - Exec. Director**  
**Jacksboro Chamber of Commerce**  
**302 S. Main St.**  
**Jacksboro, TX 76458**  
**Phone: 940-567-2602**  
**Email: office@jacksborochamber.com**

**From: Lance Pelton**  
**Core Displays**  
**817-946-3078**  
**Lance@CoreDisplays.net**

**Date:**  
**05/23/2024**

## EMC SPECIFICATIONS

Pitch: **10mm, 15mm**  
Cabinet Size: **5' tall x 8' long**  
Viewing Area: **5' tall x 8' long**  
Matrix: 10mm (150x240) | 15mm (100x160)  
Color: Full Color-Outdoor  
Configuration: 2 Units (Double Sided)  
Brightness: 11,000 NIT's  
Viewing Angle: 140\* Horizontal / 70\* Vertical  
Cabinet Access: Front Quick Release RGB Module  
Sign Weight: 480 (lbs. Per Side)  
Technical Support: Included for Life



### 5-Year Parts Warranty

Vandalism, Storm & Lightning Warranty: Includes \$5,000 insurance deductible reimbursement, see warranty for details

## LIGHTED SIGN SPECIFICATIONS

6.0

### 2'x10' Sign Faces

- Double Sided
- Polycarbonate Faces
- 3 Year Guarantee on Faces, Against Breakage. Including Vandalism
- Rated to 120 mph windloads

## COMMUNICATION

Wireless Antennas, Cloud Based Programming  
Light Sensor: Included  
Temp Sensor: NA, Temp from the Cloud

## OPTION 1 PACKAGE PRICING

**10mm**  
SUPERIOR  
RESOLUTION **\$53,700**

**15mm**  
ENHANCED  
RESOLUTION **\$47,650**



**TIPS# 23010401**

- \* Installation Included In Above Pricing
- \* 50% DEPOSIT | 50% BALANCE
- \* Shipped Ready For Installation With All Necessary Mounting Brackets Attached
- \* Manufactured in Louisville, KY
- \* Shipping Included in Above Pricing
- \* Proper Electrical Responsibility of Customer



Date:  
05/23/2024

To: Keely Hamman Payne - Exec. Director  
Jacksboro Chamber of Commerce  
302 S. Main St.  
Jacksboro, TX 76458  
Phone: 940-567-2602  
Email: office@jacksborochamber.com

From: Lance Pelton  
Core Displays  
817-946-3078  
Lance@CoreDisplays.net

## EMC SPECIFICATIONS

Pitch: **10mm, 15mm**  
Cabinet Size: **5' tall x 8' long**  
Viewing Area: **5' tall x 8' long**  
Matrix: 10mm (150x240) | 15mm (100x160)  
Color: Full Color-Outdoor  
Configuration: 2 Units (Double Sided)  
Brightness: 11,000 NIT's  
Viewing Angle: 140\* Horizontal / 70\* Vertical  
Cabinet Access: Front Quick Release RGB Module  
Sign Weight: 480 (lbs. Per Side)  
Technical Support: Included for Life



### 5-Year Parts Warranty

Vandalism, Storm & Lightning Warranty: Includes \$5,000 insurance deductible reimbursement, see warranty for details

## LIGHTED SIGN SPECIFICATIONS

6.0

### 4'x8' LIGHTED SIGN

- Double Faced
- NON LIT
- Extruded Aluminum Frame
- Panels Are Polycarbonate
- 3 Year Guarantee on Faces, Against Breakage, Including Vandalism
- Rated to 120 mph windloads
- UL Listed

## COMMUNICATION

Wireless Antennas, Cloud Based Programming  
Light Sensor: Included  
Temp Sensor: NA, Temp from the Cloud

## OPTION 2 PACKAGE PRICING

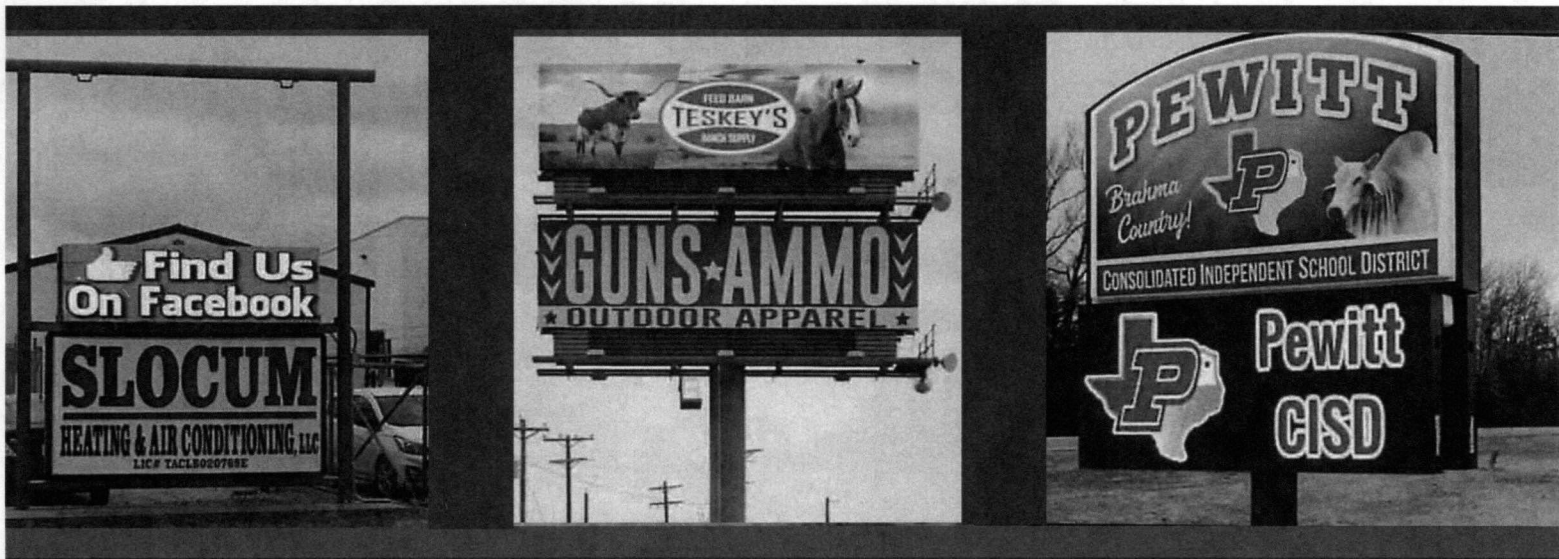
10mm  
SUPERIOR  
RESOLUTION **\$49,980**

15mm  
ENHANCED  
RESOLUTION **\$45,670**



TIPS# 23010401

- \* Installation Included In Above Pricing
- \* 50% DEPOSIT | 50% BALANCE
- \* Shipped Ready For Installation With All Necessary Mounting Brackets Attached
- \* Manufactured in Louisville, KY
- \* Shipping Included in Above Pricing
- \* Proper Electrical Responsibility of Customer



Impact LED proudly introduces the G3 Series of Impact digital sign systems. Our 1'x1' module reliably performs with high brightness, vivid colors, fast refresh rate and industry leading features such as dual power/data connections and module retention leads.

This product is MET Labs certified for NEC and UL48 compliance.



This product complies with FCC Rules - Subpart B of Section 15 of Title 47.



**Redundant Power & Data.**  
Dual power and data inputs reduce the need for a spare part by 80%. High efficiency components consume 22% less energy.



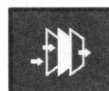
**Simple Installation.** Impact's Unistruct installation system provides an incredibly strong yet easy to use mounting substructure.



**Easy to support.** Modules are easily and quickly removed to create fast and simple service.



Premium LEDs, 4-layer Printed Circuit Boards, Meanwell power supplies and gold-plated connector pins are just a few of the components that create a beautiful, long-lasting and dependable display for your application.



Environmentally sealed cabinets prevent damaging intrusion of moisture and dust.



Cloud based software allows users to connect to their sign from any internet browser on a PC, Mac, Tablet, iPhone, or Android.

# IMPACT cloud

Impact Cloud is a user friendly cloud-based communication method for any Impact LED sign. This Browser based system works from any tablet, phone or computer with internet access.



- ◆ Easy to learn, easy to use & easily maximizes the sign's capabilities to maximize the power of the display.
- ◆ Create feature content, design reusable templates and save playlists for as long as you want that will never get lost.
- ◆ Easily move messages around the screen, enlarge, shrink or rotate content and try different fonts and colors.
- ◆ Access and monitor your sign(s) no matter where they are and no matter where you are at any time.
- ◆ Instant access to ever expanding library of graphics.
- ◆ No software updates to download...ever.

**UPDATE YOUR MESSAGES  
FROM ANY DEVICE**

**USERS CAN NOW PUBLISH CONTENT TO THEIR SIGN  
FROM THEIR Ipad, MOBILE DEVICE OR COMPUTER.**



# Storm & Vandalism Warranty

In addition to our Limited Lifetime Warranty,  
CoreDisplays offers Storm and Vandalism protection.

Although rare, things happen and you want to be covered. Without even a basic layer of protection, catastrophic events can leave you exposed to replacing your sign out of pocket. **CoreDisplays** is here to help. Should a tree fall on your sign, lightning strike and cause damage, flood waters rise or tornadoes twist, our Storm and Vandalism Warranty will help soften the blow! The warranty even applies to intentional or accidental damage to the sign such as vandalism or a car that veers off the road and destroys the sign.

**CoreDisplays** will reimburse up to \$5,000 of your insurance deductible for the incident for the life of the sign. This allows you to get repairs or replacement with zero dollars out of pocket.





Signs Express Plus  
 P.O. Box 1292  
 Stephenville, TX 76401

# Estimate

Date	Estimate #
5/31/2024	2129

<b>Name / Address</b>
Jacksboro Chamber of Commerce 302 S. Main St. Jacksboro, TX 76458

			Project
Description	Qty	Cost	Total
Optec Infinity Series viewable area 4' 8 11/16" x 8' 4 13/16" (Double/Sided) 10mm LED Full Color Sign Includes ME Cloud software, webinar training & an Optec 5 year parts warranty	1	40,311.55	40,311.55T
Labor & Materials for installation	1	1,750.00	1,750.00
Sales Tax		0.00%	0.00
<b>Total</b>			\$42,061.55

Customer Signature \_\_\_\_\_



430 Mid Cities blvd. Hurst, TX 76054

Office 817-576-4435

### Purchase Agreement

This Purchase Agreement made and entered into this 18th day of June 2024, between Elite Signs of Texas (Seller) &

Jacksboro Chamber of Commerce (Purchaser).

Job Name: <u>Jacksboro Chamber of Commerce</u>	Address: _____	Amount
<b>JOB SCOPE:</b>	City/State: <u>Jacksboro, TX</u>	
	Contact: <u>Keely Payne 940.567.2602</u>	
	Email: <u>office@jacksborochamber.com</u>	
	1 ea) Double sided, electronic message center installed on existing structure. The overall size is 4'8 11/16"x8'4 13/16", and full color. Our price includes new display, software, training and a full 5 year parts warranty.	
See options >>>>	(Good) 16mm <del>\$42,305.00</del>	\$40,805.00
	(Best) 13mm <del>\$44,950.00</del>	\$43,450.00
Note: Our price is turn-key. Remove old display and install new one.		
A 3% transaction fee will be applied on all card transactions		
Extended Warranty: <del>5 years parts</del>		
<b>Super Extended Warranty</b> - 6 years parts & 2 years labor excluding vandalism and "acts of God"		
Time to complete: 9-10 weeks from all approvals		
Electrical: Existing		
	SUBTOTAL	See pricing above
	TAX	
	CONTRACT TOTAL	
	DOWN PAYMENT	
	BALANCE DUE ON DELIVERY	-----

**ACCEPTED**

Seller: Elite Signs of Texas  
430 Mid Cities Blvd.  
Hurst, TX 76054

BY: Van Miller

Title: Owner

Date: 6.18.24

**ACCEPTED**

Purchaser: \_\_\_\_\_  
\_\_\_\_\_  
\_\_\_\_\_

BY:  \_\_\_\_\_

Title: \_\_\_\_\_

Date: \_\_\_\_\_